

IE Configuration Tutorial – Install Adobe Flash Player

The Adobe Flash Player plug-in is required to properly view websites that display video, animation, or interactive user interfaces that are made with Flash software.

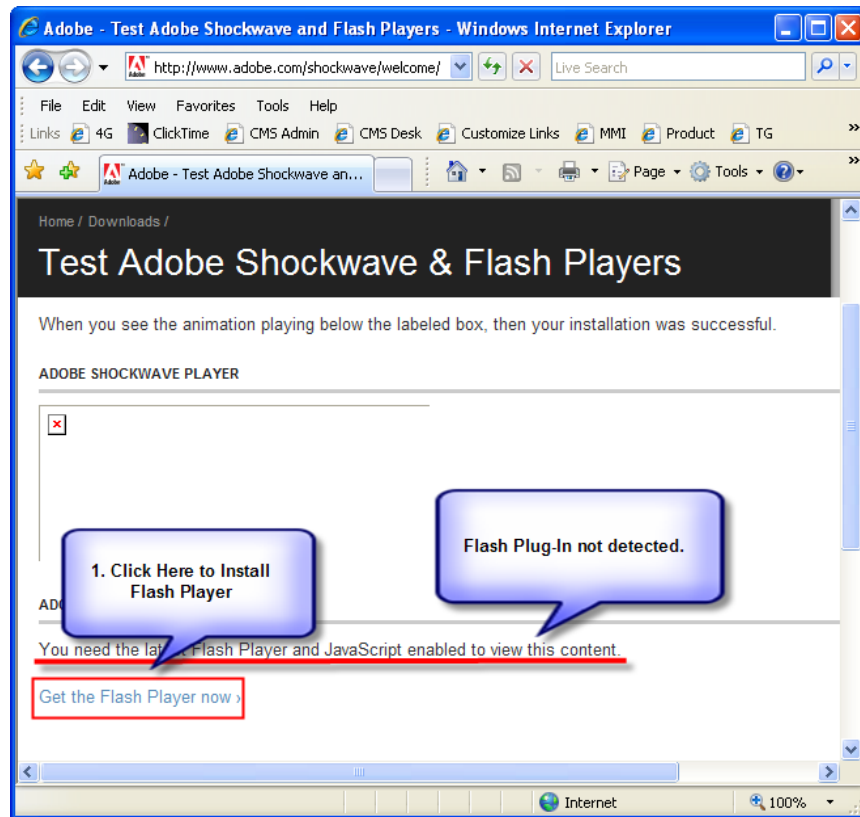
1. Test for Flash Player



Open your web browser (IE7) by clicking the  icon on your Start Menu or Desktop.

In the browser address bar, type: <http://www.adobe.com/shockwave/welcome/> and press the Enter key.

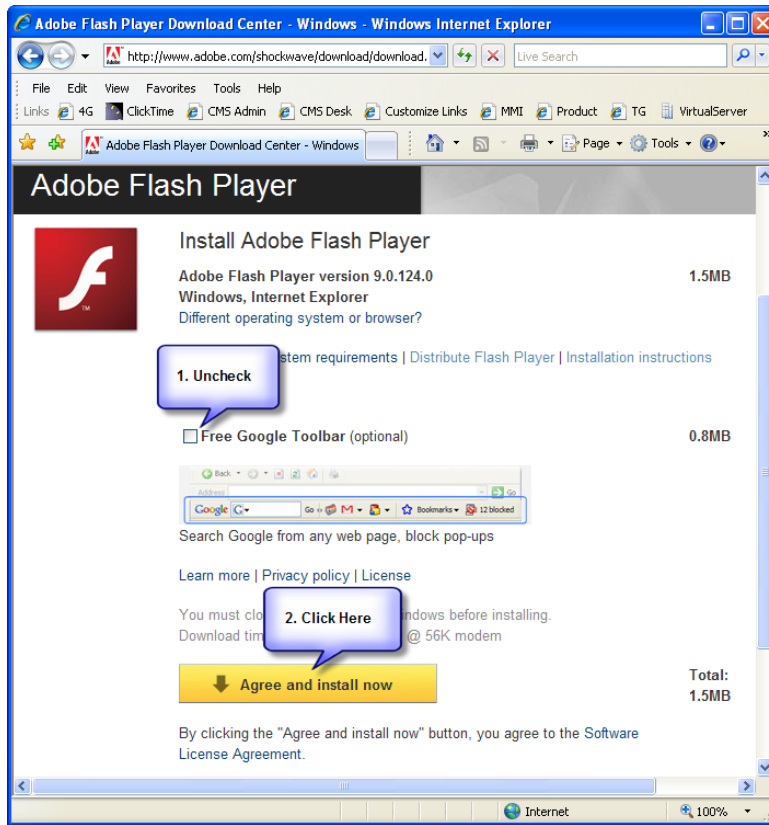
You should see the following webpage from Adobe’s site:



If you see the message “You need the latest Flash Player...”. Click the link “Get the Flash Player now >”.

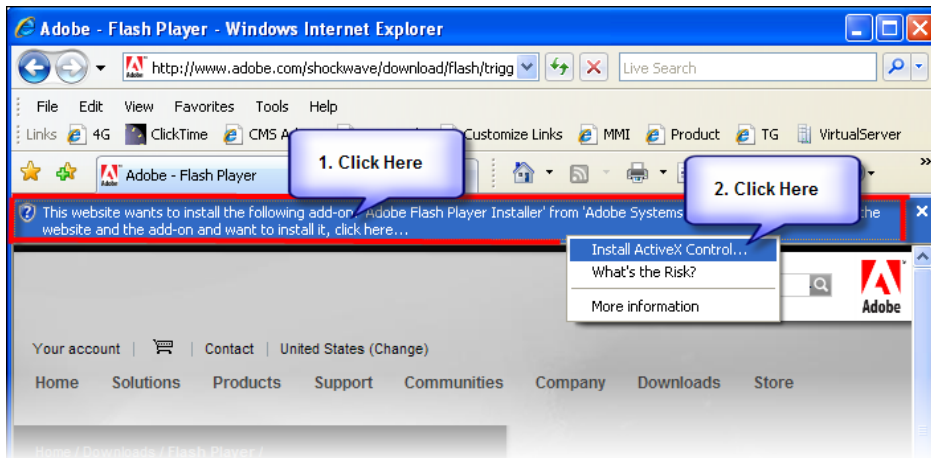
2. Install Flash Player

Uncheck the option “Free Google Toolbar”, and then click “Agree and install now”.



On the next screen, click the IE Information Bar and select "Install ActiveX Control..." from the popup menu.

If the Security Warning dialog appears, click the "Install" button.



3. Verify Flash Player is Installed

You should see the following animation once the Flash Player plug-in is installed.

