

Pilot Internet Explorer Configuration Tutorial

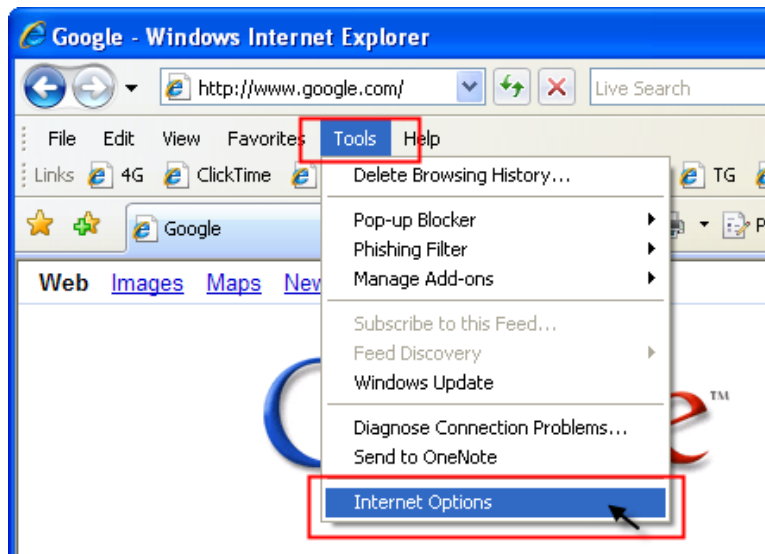
Pilot Sites are only supported to run in Internet Explorer versions 6.0 and 7.0. In order to run the various Pilot website applications properly, certain browser settings must be configured correctly.

1. Add as a Trusted Site



Open your web browser (IE7) by clicking the Internet Explorer icon on your Start Menu or Desktop.

From the Browsers menu, Select **Tools**, then **Internet Options**.



You are now presented with the Internet Options dialog.

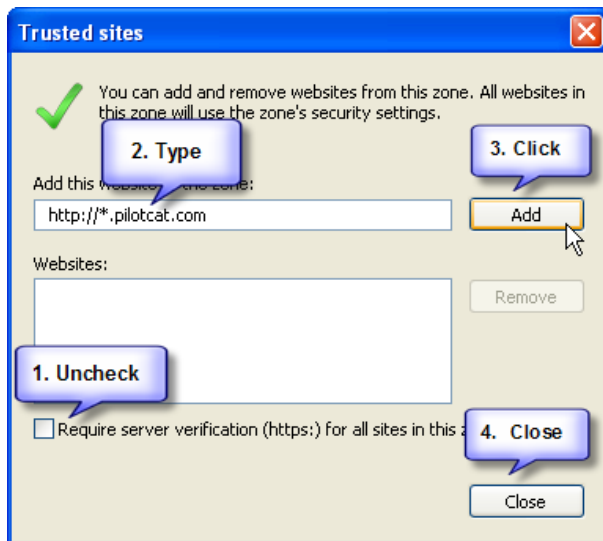
Select the **Security** tab, then click the **Trusted Sites** icon (green checkmark). Click the **Sites** button.



In the Trusted Sites dialog,

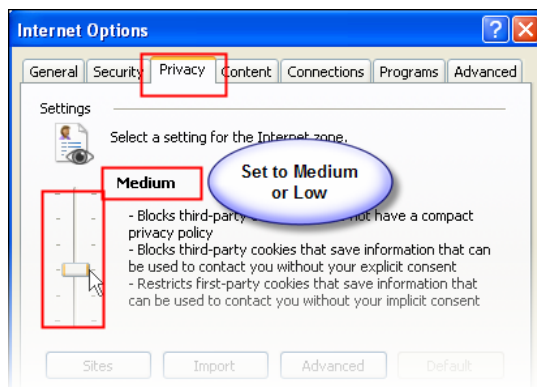
Uncheck the checkbox (Require server verification...) at the bottom of the dialog.

In the textbox, type **http://*.pilotcat.com** and click the **Add** button.

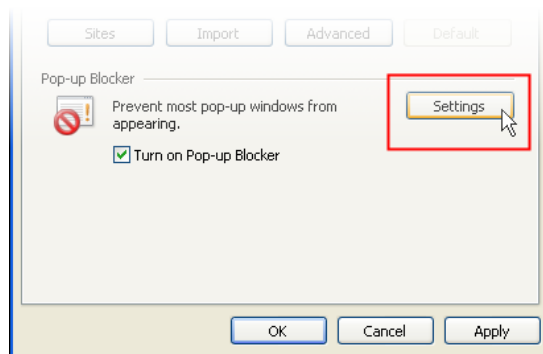


2. Configure Privacy Setting and Pop-up Blocker

From the Internet Options dialog, click the **Privacy** tab. Make sure the Settings level is set to **Medium** or **Low**.

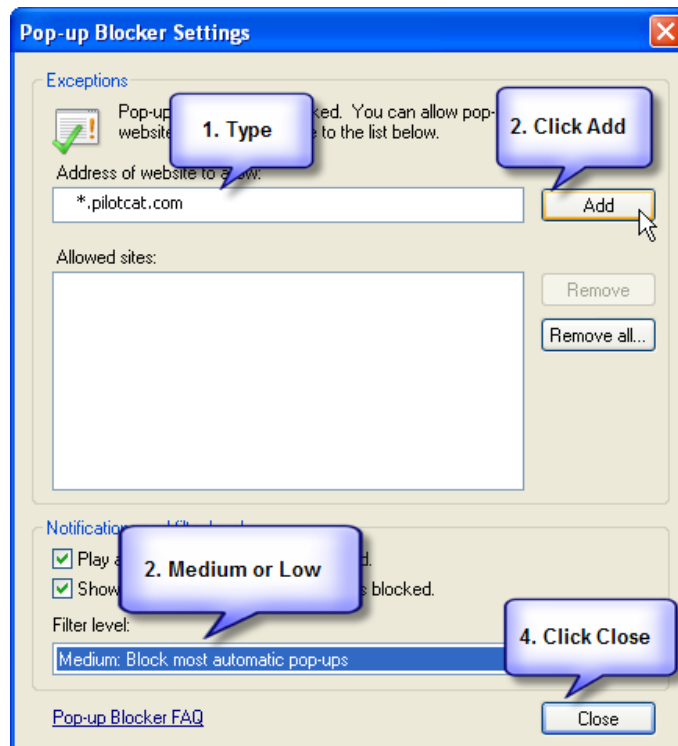


In the Pop-up Blocker section, click the **Settings** button.



In the Pop-up Blocker Settings dialog, type ***.pilotcat.com** in the textbox. Click the **Add** button.

Make sure the Filter Level is set to Medium or Low. Click the **Close** button.



3. Make sure Javascript is enabled.

From the Internet Options dialog, select the **Security** tab. Click the **Custom level...** button.

On the next dialog, scroll down close to the bottom of the list and look for the **Scripting** Section.

Under **Active Scripting**, select **Enabled**.

Make sure the Custom settings drop down (3) is set to **Medium** or **Low**. Click the **OK** button.

